

## UNIT A1 FLOOR PLAN

ONE BEDROOM/ONE BATH

1/8"

550 SQ. FT.

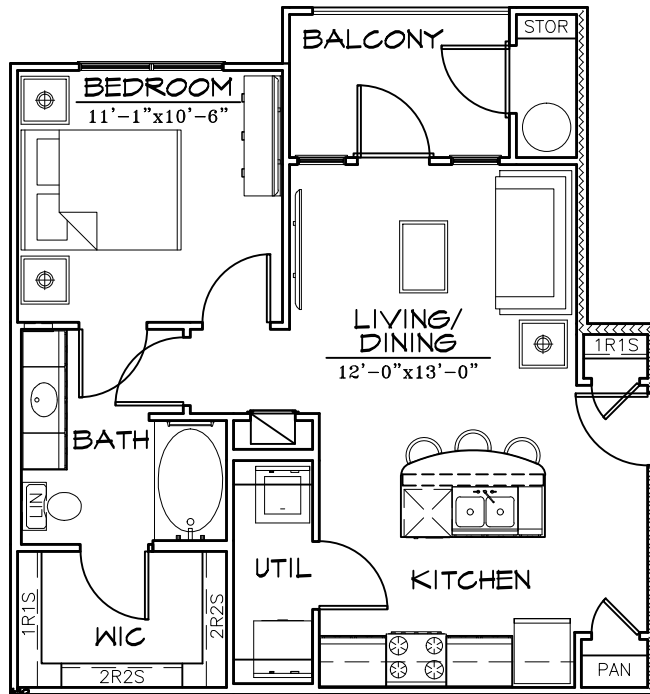
### TRACE APARTMENTS

San Marcos, Texas  
HIGHPOINTE

• ARCHITECTURE • LAND PLANNING • LANDSCAPE DESIGN • CONSTRUCTION ADMINISTRATION •

**KELLY GROSSMAN**  
ARCHITECTS, L L C

260 ADDIE ROY ROAD, SUITE 210 AUSTIN, TEXAS 78746 ph: +1.512/327.3397



## UNIT A2 FLOOR PLAN

ONE BEDROOM/ONE BATH

1/8"

650 SQ. FT.

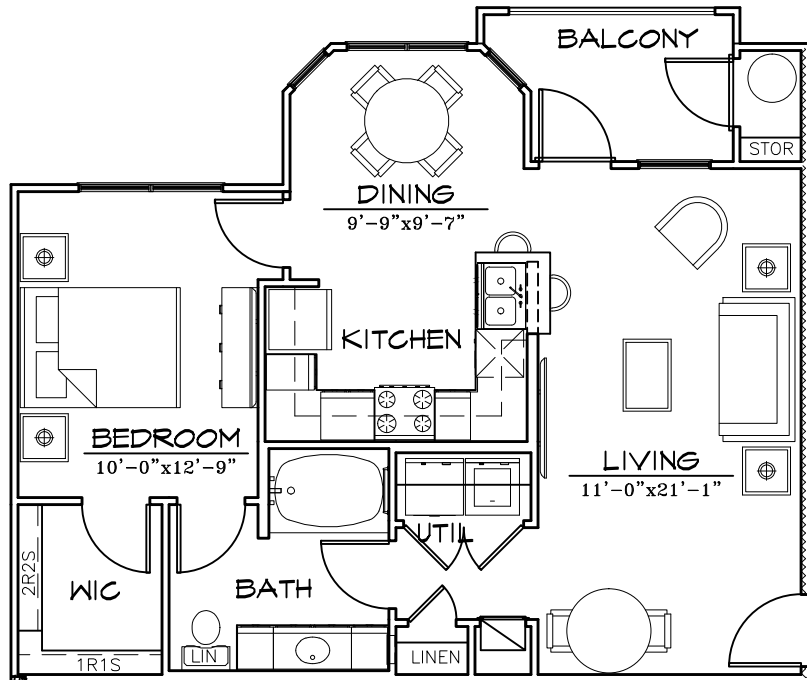
### TRACE APARTMENTS

San Marcos, Texas  
HIGHPOINTE

• ARCHITECTURE • LAND PLANNING • LANDSCAPE DESIGN • CONSTRUCTION ADMINISTRATION •

**KELLY GROSSMAN**  
ARCHITECTS, L L C

260 ADDIE ROY ROAD, SUITE 210 AUSTIN, TEXAS 78746 ph: +1.512/327.3397



## UNIT A3 FLOOR PLAN

ONE BEDROOM/ONE BATH

1/8"

775 SQ. FT.

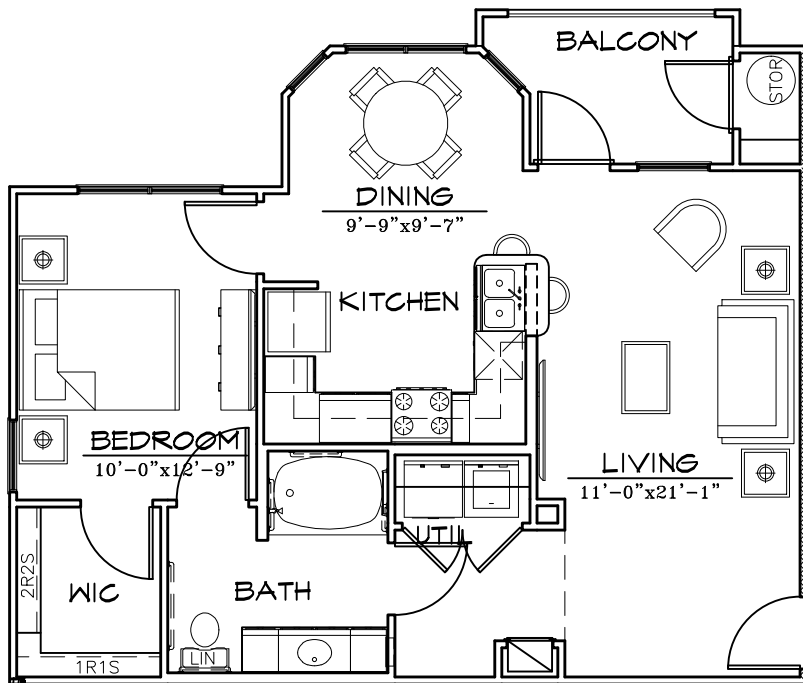
### TRACE APARTMENTS

San Marcos, Texas  
HIGHPOINTE

• ARCHITECTURE • LAND PLANNING • LANDSCAPE DESIGN • CONSTRUCTION ADMINISTRATION •

**KELLY GROSSMAN**  
ARCHITECTS, L L C

260 ADDIE ROY ROAD, SUITE 210 AUSTIN, TEXAS 78746 ph: +1.512/327.3397



## UNIT A3-HC FLOOR PLAN

ONE BEDROOM/ONE BATH

1/8"

775 SQ. FT.

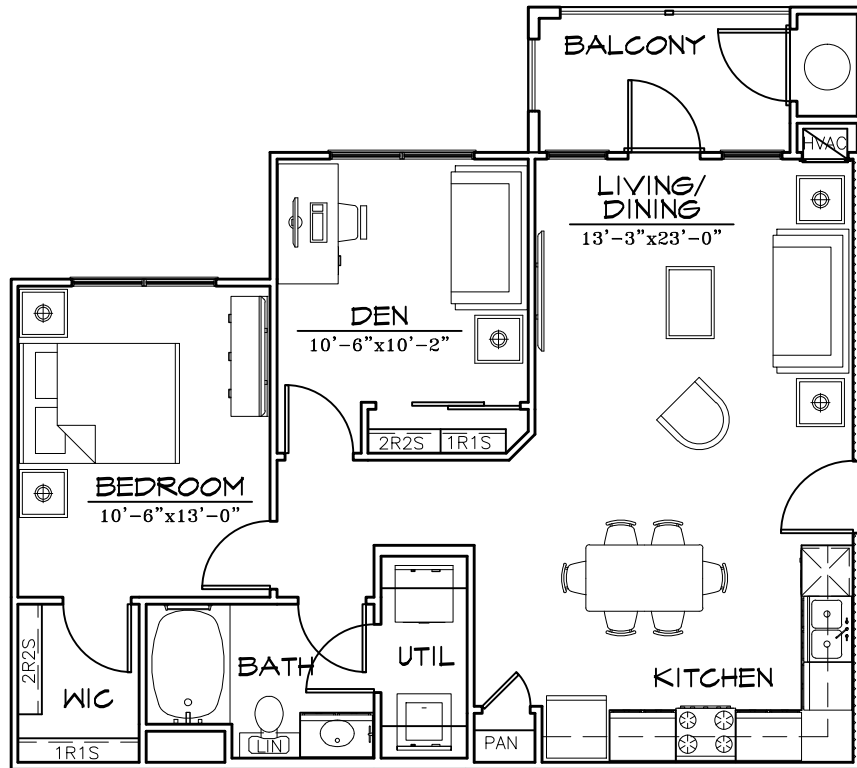
### TRACE APARTMENTS

San Marcos, Texas  
HIGHPOINTE

• ARCHITECTURE • LAND PLANNING • LANDSCAPE DESIGN • CONSTRUCTION ADMINISTRATION •

**KELLY GROSSMAN**  
ARCHITECTS, L L C

260 ADDIE ROY ROAD, SUITE 210 AUSTIN, TEXAS 78746 ph: +1.512/327.3397



## UNIT A4 FLOOR PLAN

ONE BEDROOM/ONE BATH/DEN

1/8"

875 SQ. FT.

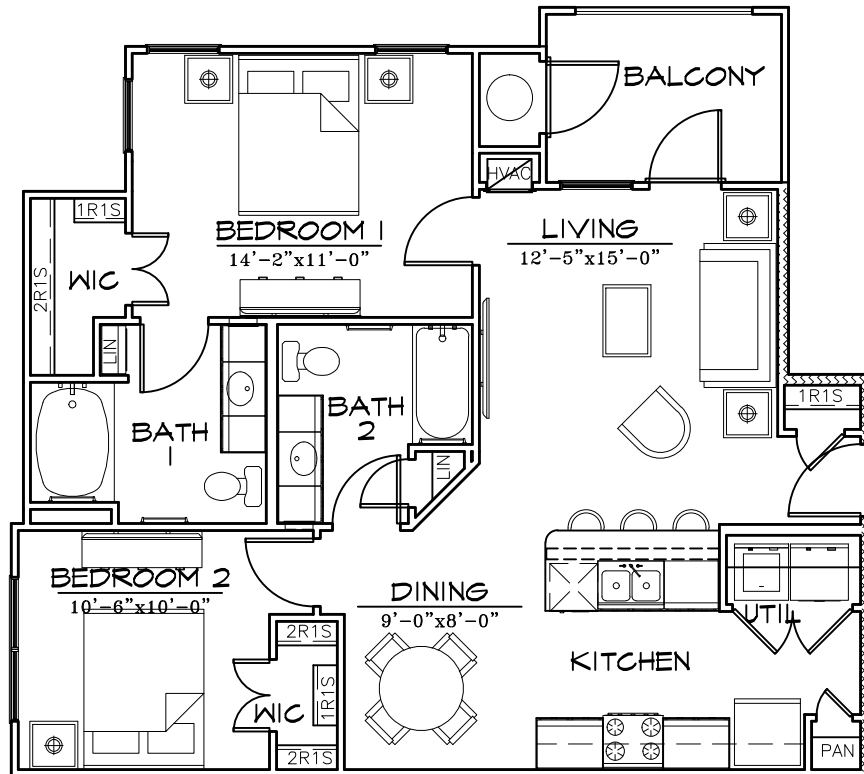
### TRACE APARTMENTS

San Marcos, Texas  
HIGHPOINTE

• ARCHITECTURE • LAND PLANNING • LANDSCAPE DESIGN • CONSTRUCTION ADMINISTRATION •

**KELLY GROSSMAN**  
ARCHITECTS, L L C

260 ADDIE ROY ROAD, SUITE 210 AUSTIN, TEXAS 78746 ph: +1.512/327.3397



## UNIT B1 FLOOR PLAN

TWO BEDROOM/ONE BATH

1/8"

950 SQ. FT.

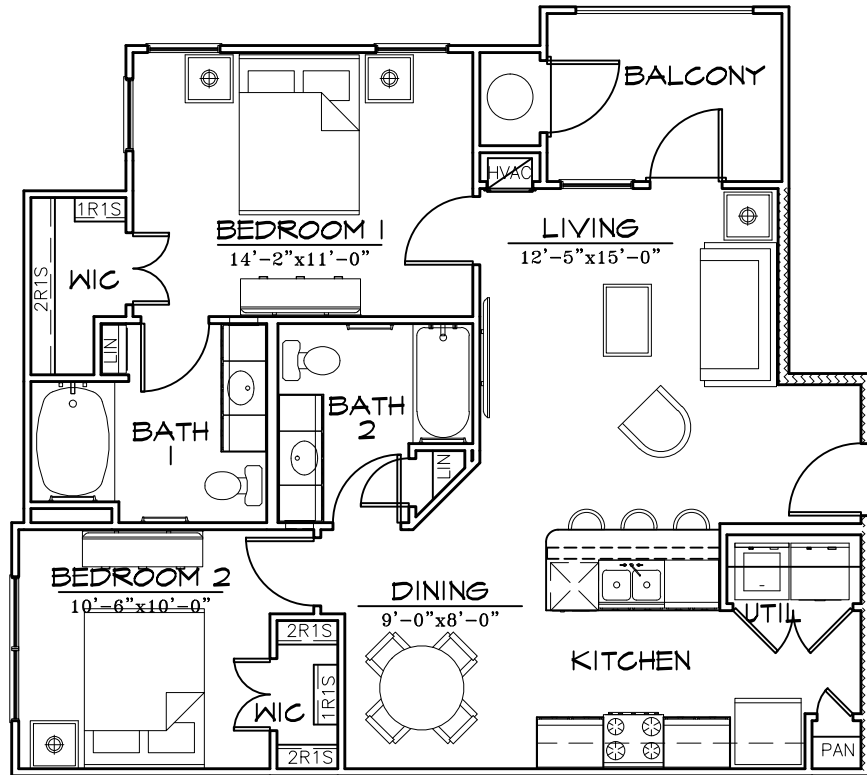
### TRACE APARTMENTS

San Marcos, Texas  
HIGHPOINTE

• ARCHITECTURE • LAND PLANNING • LANDSCAPE DESIGN • CONSTRUCTION ADMINISTRATION •

**KELLY GROSSMAN**  
ARCHITECTS, L L C

260 ADDIE ROY ROAD, SUITE 210 AUSTIN, TEXAS 78746 ph: +1.512/327.3397



## UNIT B1-1 FLOOR PLAN

TWO BEDROOM/ONE BATH

1/8"

950 SQ. FT.

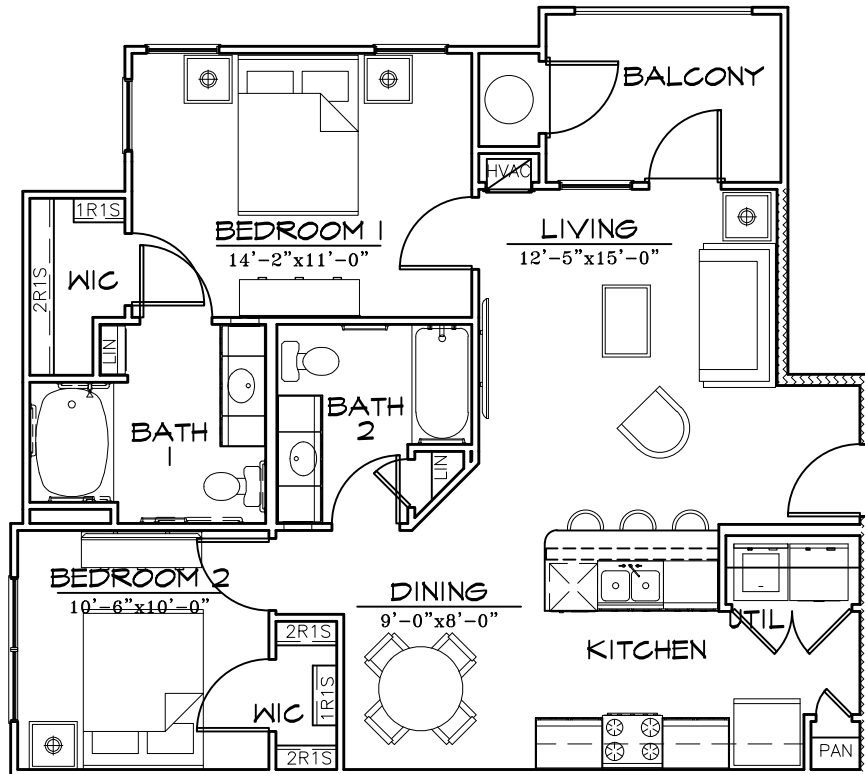
### TRACE APARTMENTS

San Marcos, Texas  
HIGHPOINTE

• ARCHITECTURE • LAND PLANNING • LANDSCAPE DESIGN • CONSTRUCTION ADMINISTRATION •

**KELLY GROSSMAN**  
ARCHITECTS, L L C

260 ADDIE ROY ROAD, SUITE 210 AUSTIN, TEXAS 78746 ph: +1.512/327.3397



# UNIT B1-HC FLOOR PLAN

TWO BEDROOM/TWO BATH

1/8"

950 SQ. FT.

## TRACE APARTMENTS

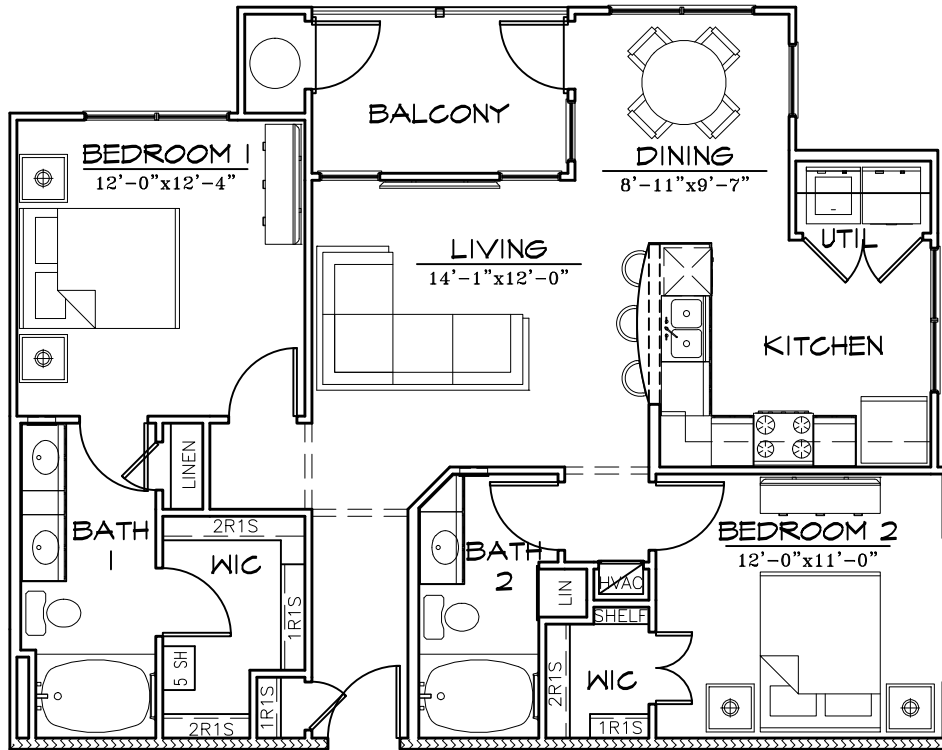
San Marcos, Texas  
HIGHPOINTE

• ARCHITECTURE • LAND PLANNING • LANDSCAPE DESIGN • CONSTRUCTION ADMINISTRATION •

**KELLY GROSSMAN**  
ARCHITECTS, L L C

260 ADDIE ROY ROAD, SUITE 210 AUSTIN, TEXAS 78746 ph: +1.512/327.3397





## UNIT B2 FLOOR PLAN

TWO BEDROOM/TWO BATH

1/8"

1,050 SQ. FT.

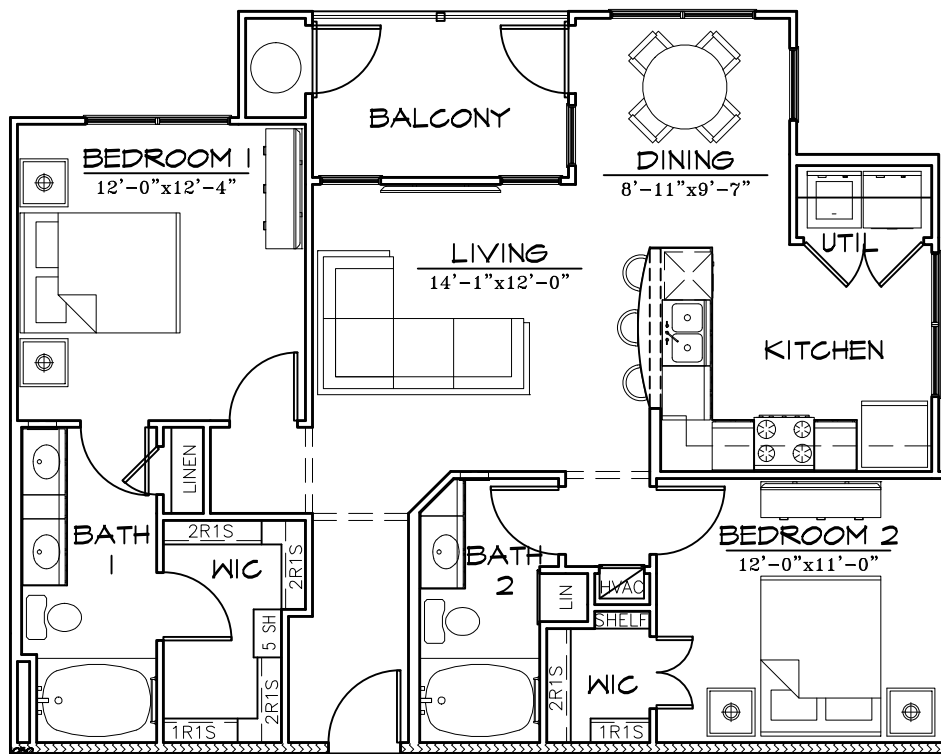
### TRACE APARTMENTS

San Marcos, Texas  
HIGHPOINTE

• ARCHITECTURE • LAND PLANNING • LANDSCAPE DESIGN • CONSTRUCTION ADMINISTRATION •

**KELLY GROSSMAN**  
ARCHITECTS, L L C

260 ADDIE ROY ROAD, SUITE 210 AUSTIN, TEXAS 78746 ph: +1.512/327.3397



## UNIT B2-1 FLOOR PLAN

TWO BEDROOM/TWO BATH

1/8"

1,050 SQ. FT.

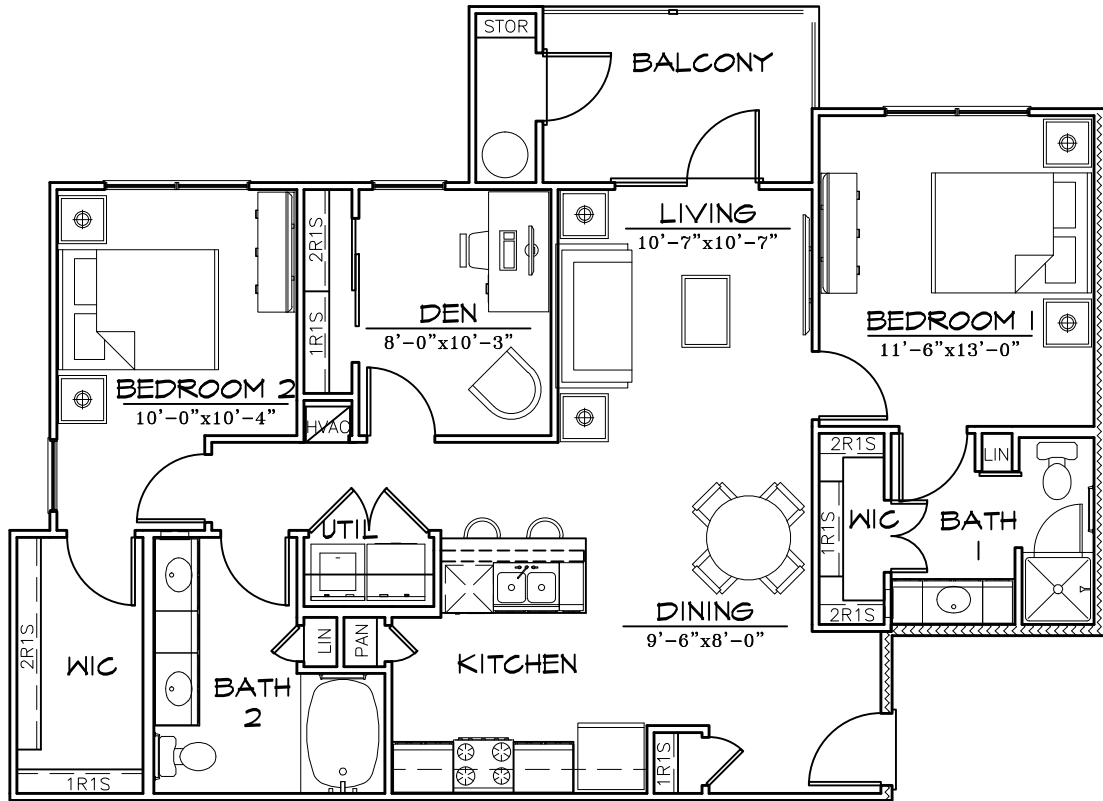
### TRACE APARTMENTS

San Marcos, Texas  
HIGHPOINTE

• ARCHITECTURE • LAND PLANNING • LANDSCAPE DESIGN • CONSTRUCTION ADMINISTRATION •

**KELLY GROSSMAN**  
ARCHITECTS, LLC

260 ADDIE ROY ROAD, SUITE 210 AUSTIN, TEXAS 78746 ph: +1.512/327.3397



## UNIT B3 FLOOR PLAN

TWO BEDROOM/TWO BATH/DEN

1/8"

1,150 SQ. FT.

### TRACE APARTMENTS

San Marcos, Texas  
HIGHPOINTE

• ARCHITECTURE • LAND PLANNING • LANDSCAPE DESIGN • CONSTRUCTION ADMINISTRATION •

**KELLY GROSSMAN**  
ARCHITECTS, L L C

260 ADDIE ROY ROAD, SUITE 210 AUSTIN, TEXAS 78746 ph: +1.512/327.3397